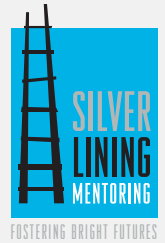


# BECOME A MENTOR!

silverliningmentoring.org



## OUR MISSION

Silver Lining Mentoring empowers youth in foster care to thrive through committed mentoring relationships and the development of essential life skills.



## THE NEED

Nearly 2,000 youth in the Greater Boston area have been removed from their families and placed in foster care due to abuse and neglect.

- Youth in foster care are frequently moved to different homes and schools—often multiple times in one year.
- Youth in care lack consistent relationships and a sense of belonging, which are cornerstones for healthy development.

## THE SOLUTION

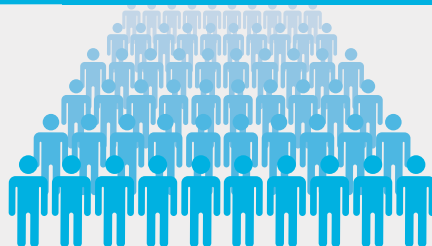
Founded in 2001, Silver Lining Mentoring is the only mentoring organization in the Commonwealth exclusively focused on the unique needs of youth in foster care. We provide long term one-to-one mentoring and life skills development for young people who have been removed from their homes due to abuse or neglect.

“Like all friendships, it’s a two way street. As our time spent together enriches us both in profound and often unexpected ways.”

—Lawrence, Mentor

MATCHES SUPPORTED SINCE 2001

330



“My Mentor is the person who replaces all the people that should have been there for me.”

—Silver Lining Mentoring Youth Participant

# ABOUT MENTORING

Youth in foster care are actively seeking mentorship from caring, committed adults in our community.

## MENTORS ARE MEMORY-KEEPERS



Sharing memories through the frequent changes that mark youths' experience in foster care.

## MENTORS ARE FRIENDS



Building a trusting relationship grounded in care and respect.

## MENTORS ARE STABILITY



Offering consistency, a sense of belonging, and emotional support.

In addition to being memory-keepers, friends, and a source of stability, our volunteer mentors are often the only adults in our youth's lives who are not paid to spend time with them.

Mentors receive extensive training before being matched with a mentee, and Silver Lining's clinically trained social workers support both the mentor and the mentee throughout the relationship.

You don't need an advanced degree to be a mentor—just a caring heart and willingness to support your mentee through both the good times and the tough times.

## MENTOR ELIGIBILITY REQUIREMENTS

- Must be 21+
- Pass background check
- Minimum 1 year commitment
- Able to travel to the Greater Boston area

## PATH TO BECOMING A MENTOR



BECOME A MENTOR TODAY!

## READY TO LEARN MORE?

View our info session at [silverliningmentoring.org/become-a-mentor](https://silverliningmentoring.org/become-a-mentor)

## CONTACT

**Alex Parkes**  
Volunteer Manager  
[alex@silverliningmentoring.org](mailto:alex@silverliningmentoring.org)



**Silver Lining Mentoring**  
727 Atlantic Ave, 3rd Floor  
Boston, MA 02111  
617.224.1300  
[silverliningmentoring.org](https://silverliningmentoring.org)

## Follow us on social media!

- [facebook.com/silverliningmentoring](https://facebook.com/silverliningmentoring)
- [@SLMyouth](https://twitter.com/SLMyouth)
- [@silverliningmentoring](https://instagram.com/silverliningmentoring)